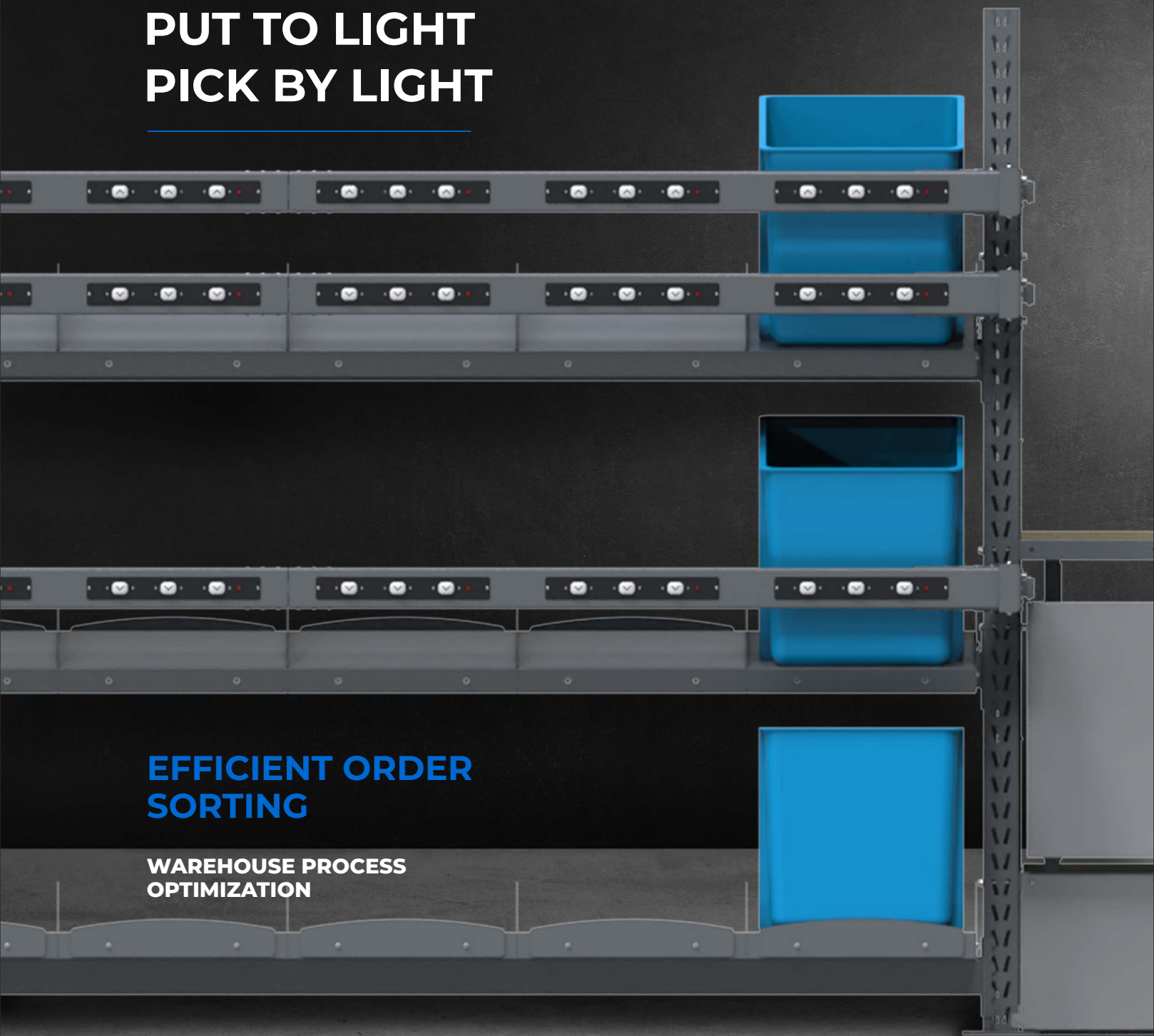




MODULES PUT TO LIGHT PICK BY LIGHT

**EFFICIENT ORDER
SORTING**

**WAREHOUSE PROCESS
OPTIMIZATION**





PUT TO LIGHT MODULES

**- a state-of-the-art solution
that automates order sorting
and selection**

Upon arrival in the sorting area, each item is scanned. This activates the picking modules which provide a light signal at each location. Guided by the light, pickers distribute the items and then confirm task completion by pressing the button.

RANGE OF APPLICATION



**Warehouse
facilities**



**Wholesale
stores**



Marketplaces



Fulfillment



**Online
stores**



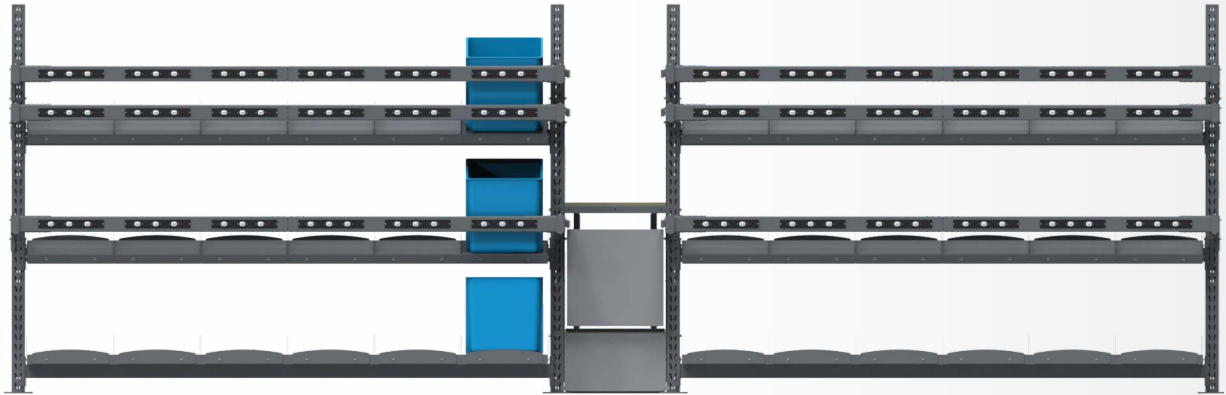
**Pharmaceutical
distribution**



**Cosmetics
distribution**



**Distribution
centers**



ADVANTAGES OF THE MODULES USE:



Speed

Sorting processes are accelerated by 2-5 times



Accuracy

Error likelihood is minimized



Cost-savings

Allows for a 50% staff reduction



Control

The system allows for tracking the KPI of each employee



Customer loyalty

As a result of error elimination



Operational Transparency

The system retains history



Development

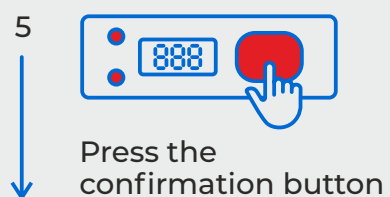
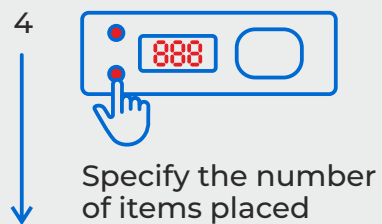
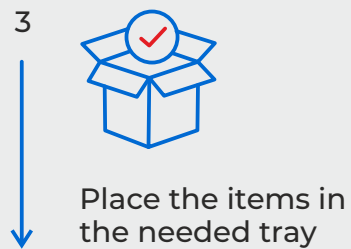
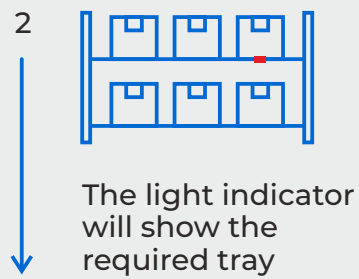
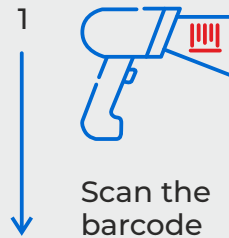
Positively impacts the entire process, leading to an overall increase in company performance



Scalability

The system allows you to manage a large number of SKUs

SYSTEM OPERATION SCHEME



STANDARD

Dimensions: 165x40



24 Volts



1 confirmation button
with RGB backlight



three-digit
seven-segment display



2 service buttons



Rs485 data
exchange interface

DISPLAYED INFORMATION:



number of
items in a cell



individual color backlight
for each operator
(up to 5 operators simultaneously)



number of products to
be picked/placed in a cell



MINI

Dimensions: 100x40



24 Volts



1 confirmation button
with RGB backlight



three-digit
seven-segment display



2 service buttons



Rs485 data
exchange interface

DISPLAYED INFORMATION:



number of
items in a cell



individual color backlight
for each operator
(up to 5 operators simultaneously)

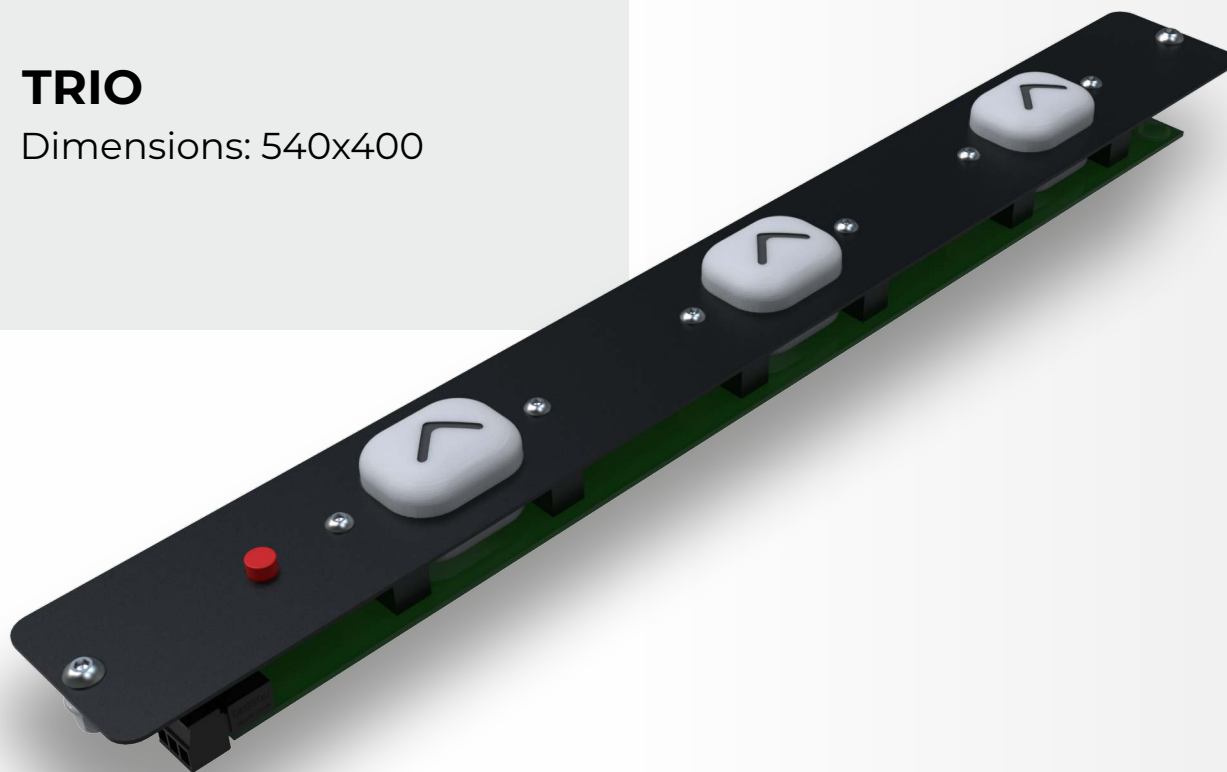


number of products to
be picked/placed in a cell



TRIO

Dimensions: 540x400



3 confirmation buttons
with RGB backlight



Interface RS485 for
data exchange



1 service button



24 Volts



Version for
simultaneous
work of 3 operators

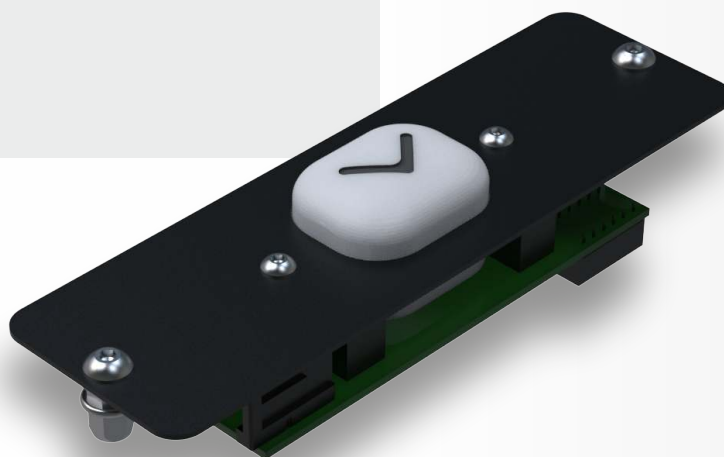


Optional connection
of external button



UNO

Dimensions: 100x400



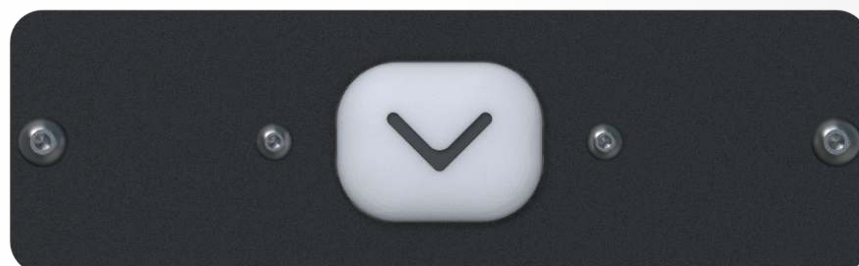
24 Volts



1 confirmation button
with RGB backlight



Rs485 interface for
data exchange



WE ARE TRUSTED BY



+1 (888) 877-3780
+44 (800) 520-0059
+381 (61) 193-0238
sales@photomechanics.com
www.photomechanics.com



Photomechanics
Jurija Gagarina 23, Office 329,
Belgrade, Serbia,
11070

